

WELCOME

SUCCESS STARTS HERE

Charlie Peel, Schools Liaison Manager



HOW DIFFERENT IS COLLEGE?

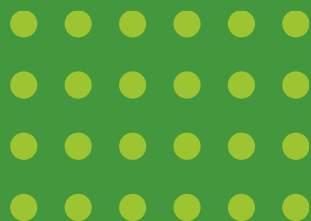


	SCHOOL	COLLEGE
WHAT YOU STUDY	A range of GCSEs	You only choose one vocational course
HOW YOU ARE ASSESSED	There's a heavier focus on exams	Coursework / practical based with some exams
A DIFFERENT ENVIRONMENT	Sir/Miss Uniform School Bell	Adult environment You'll use Tutor's first name You'll wear own clothes or a course specific uniform Personal time management



WHY CHOOSE ESC?

- » High quality teaching
- » First class facilities
- » Fantastic transport links
- » Excellent progression
- » High success rates
- » Strong industry connections
- » Career focused courses



FIRST CLASS FACILITIES

East Surrey College is situated in the heart of **Redhill** with **well equipped, state-of-the-art** facilities including:

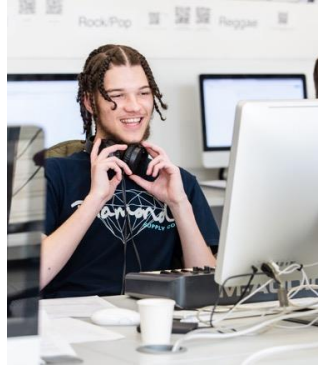
- » Workshops
- » Studios
- » Sports Facilities
- » Media production suites
- » Learning resource centre (LRC)



SUBJECT AREAS



**Applied
Science**



**Art, Design &
Media**

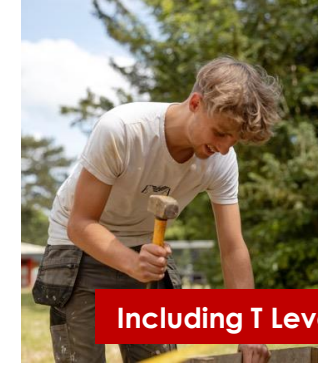


**Aviation, Cabin
Crew and
Travel & Tourism**



Including T Levels

**Business &
Accounting**



Including T Levels

**Construction &
Engineering**



Including T Levels

**IT & Games
Design**



**Life Skills
SEND & ESOL**



Motor Vehicle



**Public Services
& Sport**



Including T Levels

**Early Years &
Childcare**



Including T Levels

**Hair, Beauty &
Spa**



Including T Levels

**Health & Social
Care**

T-LEVELS

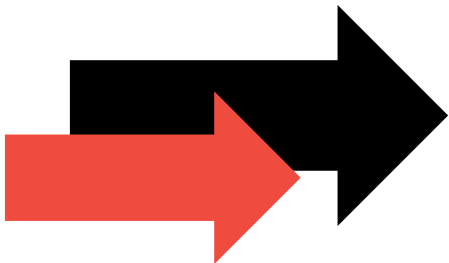
THE NEXT LEVEL QUALIFICATION

WHAT ARE T LEVELS?

T Levels are new Level 3 courses and are equivalent to a Level 3 vocational study programme or studying 3 A levels.

T Levels offer you a mixture of college-based learning and an industry placement of at least 315 hours (approximately 45 days).

You'll spend 80% of your time in College and 20% on an industry placement.



SUBJECTS AVAILABLE AT ESC

ACCOUNTING

DESIGN & DEVELOPMENT FOR
ENGINEERING & MANUFACTURING

DESIGN, SURVEYING & PLANNING
FOR CONSTRUCTION

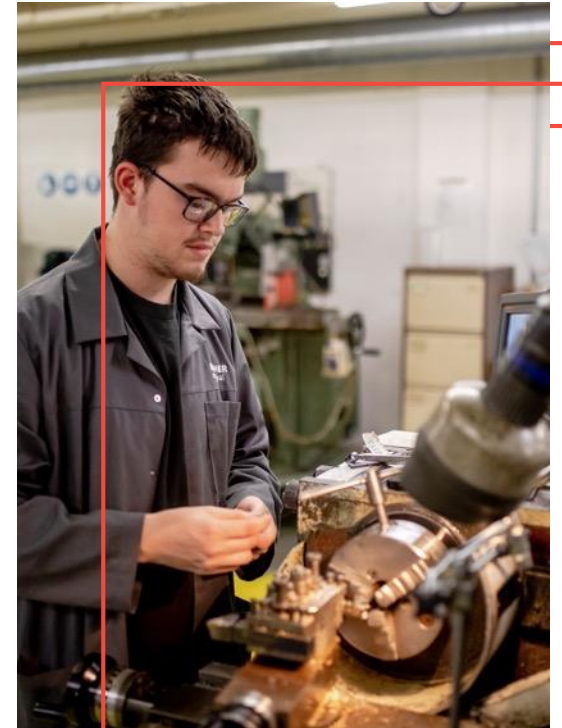
DIGITAL PRODUCTION,
DESIGN & DEVELOPMENT

EDUCATION & CHILDCARE

HAIRDRESSING, BARBERING & BEAUTY

HEALTH

MANAGEMENT & ADMINISTRATION



Apprenticeships

AVAILABLE SECTORS:

- » Accounting
- » Business & IT
- » Childcare
- » Construction
- » Electrical Installation
- » Engineering
- » Health & Social Care
- » Hairdressing & Barbering
- » HR & Customer Service
- » Education
- » Management & Team Leading
- » Plumbing

Voted number **1***
**FURTHER EDUCATION
TRAINING PROVIDER
IN THE SOUTH EAST
2023/24**



LEVELS AVAILABLE:

- » **INTERMEDIATE APPRENTICESHIPS**
equivalent to 5 good GCSE passes
- » **ADVANCED APPRENTICESHIPS**
equivalent to 2 A Level passes
- » **HIGHER APPRENTICESHIPS**
equivalent to Level 4 qualification or above
- » **DEGREE APPRENTICESHIPS**
equivalent to Level 6 qualification or above

LINKS WITH LOCAL BUSINESSES

We work closely with local employers to ensure our courses are designed to support and grow employment opportunities for young people and adults.



STUDENTS HAVE PREVIOUSLY BENEFITED FROM:

- » **ESC JOB FAIR**
Meet with local and national employers at our annual Job Fair
- » **ESC JOB ZONE**
Exclusively for ESC students to view and apply for local part-time and full-time jobs
- » **WORKING WITH LOCAL EMPLOYERS**
Regular talks and workshops by industry leaders
- » **WORK EXPERIENCE**
We can help arrange your work experience placement as part of your course

LINKS WITH LOCAL BUSINESSES



Balfour Beatty



BUXTON



Willis
Towers
Watson



dermalogica®

FUTURE

YOUR LONDON AIRPORT
Gatwick



YMCA

Tandridge
District Council

ISOenergy
sustainable energy systems

keltbray



WILLMOTT DIXON
SINCE 1852

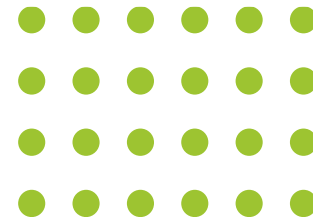


LONDON
BIGGIN HILL
AIRPORT

Reigate & Banstead
BOROUGH COUNCIL
Banstead | Horley | Redhill | Reigate



THALES



B3 HOMES

SKANSKA



First Community Health & Care

Wates

Sale
Group

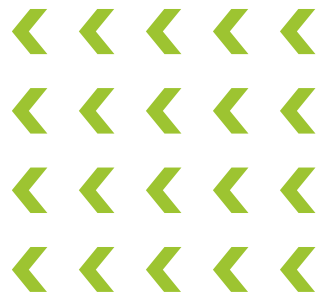
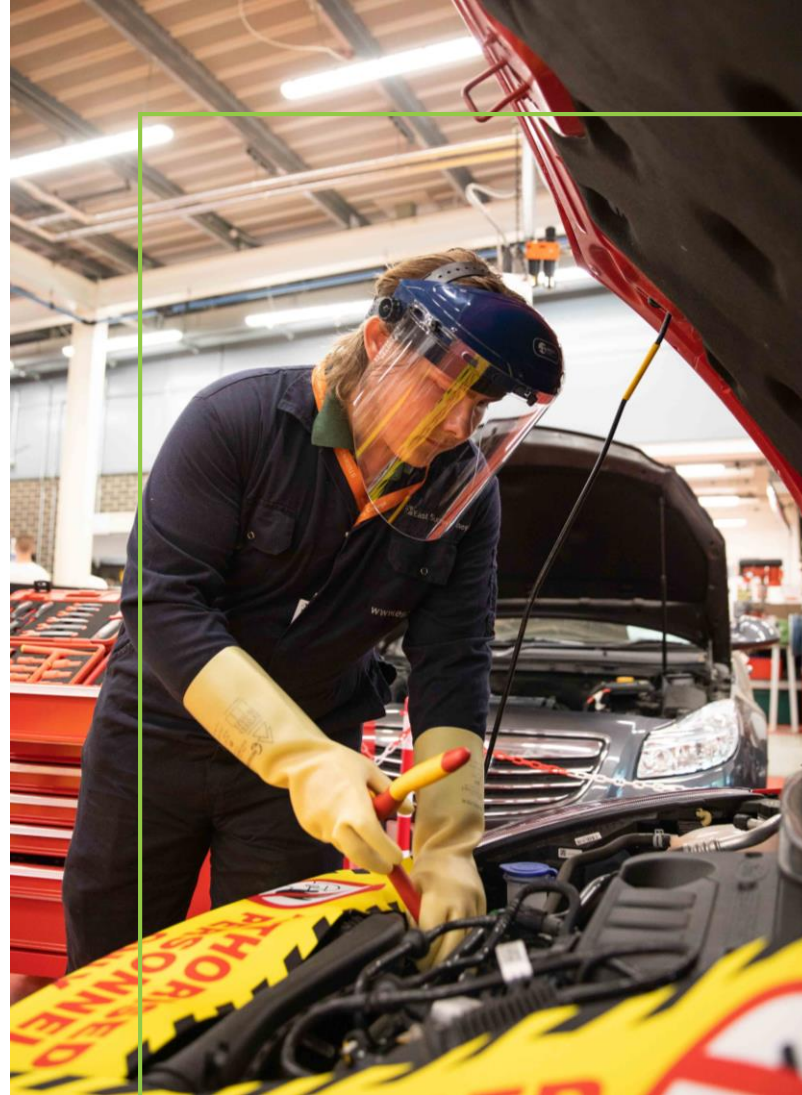
L'IMAGE
HAIR

Apply online at www.esc.ac.uk

YOUR FUTURE PATHWAY

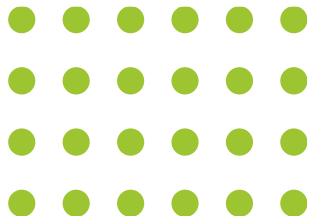
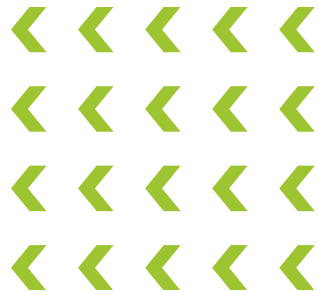
Choose your pathway with a vocational course that can lead on to:

- » An Apprenticeship
- » University Level / Higher Education
- » Employment



HOW WE SUPPORT YOU

- » Individual tutorials
- » Additional Learning Support
- » Support groups
- » UCAS applications
- » Financial and bursary support
- » Counselling and wellbeing
- » Careers advice and guidance
- » Work experience and work projects
- » English and/or Maths* (GCSE/Functional Skills)
*if Grade 4 not achieved





Get involved and join in with our exciting activity programme!

Taking part is a great way of meeting new people, learning new skills and having fun!

- » Student Union
- » Freshers' Fair
- » College Sports Clubs
- » Community Work
- » Trips & Excursions



MEET OUR STUDENTS



LISA // Education & Childcare – T Level

WHAT DO YOU LIKE MOST ABOUT YOUR COURSE?

I really like the work/study balance of my timetable – three days in College and two days work placement in a nursery, which helps so much with coursework and it gives a great insight into what work will be really like.



MEET OUR STUDENTS



ELI

Art, & Design – Level 3

Why did you choose this course?

I didn't do Art while at school but I always like it growing up. Choosing this course was the best thing I have ever done because I get to freely express myself.

What made you decide to study at JRC?

When I came to the open day, I felt so welcomed by everyone. I knew that enrolling in this college was the right decision for me. I saw that students showcased their work and it helped to see this. I visited other colleges but this one stuck out.

What are your future plans?

I have an offer from Goldsmiths, University of London to study BA (Hons) Design. Eli wants to be a Graphic Designer and one day maybe get into Film.

» Apply online // www.esc.ac.uk
www.johnruskin.ac.uk

MEET OUR STUDENTS



KEWELL

Sport Level 3

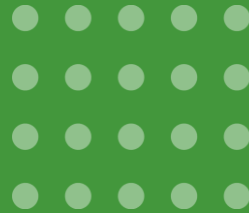
What led you to choosing this course?

After leaving school I did Level 1 Sports at ESC then got accepted on to the Chelsea FC Foundation Football Academy Programme in Crawley which included BTEC Sports. When I reached the age limit for the programme of 19, I returned to ESC to continue with Level 3.

Have you done any work experience during this course?

I worked in gym management at Energie Fitness in Crawley to see what it's like working in a gym environment.

During this, I spoke to people about their gym stories and learned how to coach new participants and how a gym is run, including how to attract and retain customers. The Manager subsequently offered me a part-time job as a trainer!



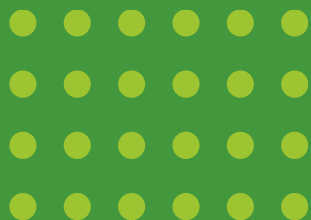
ENTRY CRITERIA

We offer a wide range of courses to accommodate students at all levels.

All of our courses have specific entry criteria ranging from no formal qualifications for Entry Level courses to 5 GCSEs grade 4 and above for our Level 3 courses.

Visit the website or view our Full-time guide to find out more about your chosen course and the entry requirements.

www.esc.ac.uk



HOW TO APPLY



OPEN EVENTS



Our Open Events are the perfect opportunity to find out all the information you need to take your next steps!

Tuesday 24 September 2024 5.00pm – 8.00pm

Saturday 12 October 2024 10.00am – 1:00pm

Book online at www.esc.ac.uk/events



» Apply online at www.esc.ac.uk

STAY IN TOUCH



Visit our website for the latest Information about ESC.

- » College news and updates
- » Course information
- » Video tours
- » Events

GET SOCIAL

Want to keep up-to-date with everything going on at East Surrey College?

Follow us on social media for the latest updates and news...



» Apply online at www.esc.ac.uk